

Mitigating Violence for Resilient Communities

July 29th, 2016

Location: Hilton Downtown Omaha
1001 Cass Street
Omaha, NE 68102

Target Audience: Behavioral Health Professionals, Public Health Officials, Clergy, Emergency Managers, First Responders, and Security Professionals.

Register online at:

<http://go.unl.edu/greatplains-dbh-2016>

For more information, please visit:

<http://www.disastermh.nebraska.edu>

Questions about this conference?

Please contact Quinn Lewandowski by email at qlewandowski2@unl.edu or directly by phone at 402-472-9459.

UNIVERSITY OF
Nebraska
PUBLIC POLICY
CENTER
215 Centennial Mall South
Suite 401
P.O. Box 880228
Lincoln, NE 68588-0228

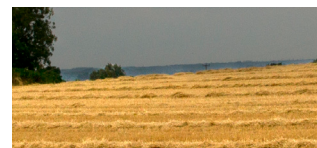
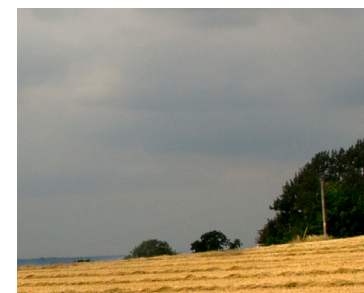


Great Plains Disaster Behavioral Health Conference

Mitigating Violence
for
Resilient
Communities

JULY
29th

2016



Images courtesy of Flickr users fables98 and barryskeates. Images are used under the Creative Commons Attribution: Noncommercial license.

July 29, 2016 | Omaha, NE

Featured Speakers

9:00 AM - 4:30 PM

Morning

Mark Follman | National Affairs Editor at Mother Jones Magazine | **Topic:** The Impact of Mass Violence on Communities

Randy K. Otto, Ph.D. | Clinical and Forensic Psychologist & Professor at the University of South Florida | **Topic:** Violence Risk Assessment

Afternoon

Mario Scalora, Ph.D. | Psychologist & Professor at the University of Nebraska-Lincoln | **Topic:** Threat Assessment

Mark Lukin, Ph.D. | Clinical Psychologist with the Nebraska Department of Correctional Services | **Topic:** The Ethics of Reporting

CEU Information

CEUs
6.0 hours

This conference will provide up to 6.0 hours of APA-approved continuing education units

Conference Information

Conference Date | 7/29/16
9:00 AM - 4:30 PM CDT
Registration opens at 8:30 AM
Lunch is provided

Hilton Downtown Omaha
1001 Cass Street
Omaha, NE 68102

Blackstone Ballroom

Cost

Registration:

\$75

General registration after
7/22/16 - \$85

Sponsors

University of Nebraska
Public Policy Center

Omaha Metropolitan Medical
Response System (OMMRS)

Bryan Medical Center

Nebraska Department of
Health and Human Services

Conference Objectives

1. Become familiar with the psychological impact of mass violence on individuals and communities.
2. Distinguish between Violence Risk Assessment and Threat Assessment.
3. Discuss the ethical issues regarding reporting of potentially violent activity.

This program is co-sponsored by the University of Nebraska Public Policy Center and PsychContinuingEd.com. PsychContinuingEd.com is approved by the American Psychological Association to sponsor continuing education for psychologists. PsychContinuingEd.com maintains responsibility for this program and its content. Participants attending this program can receive CEs.



Register online at:

<http://go.unl.edu/greatplains-dbh-2016>

For more information, please visit:

<http://www.disastermh.nebraska.edu>

